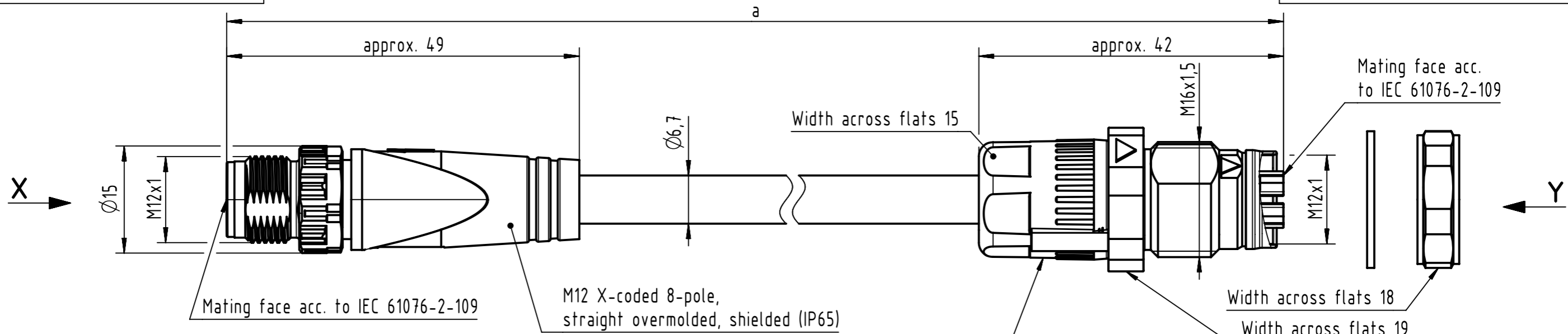
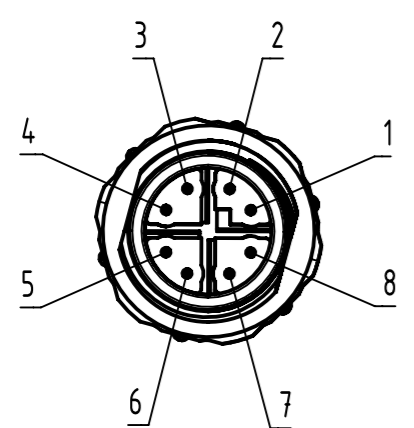


Connector Location A

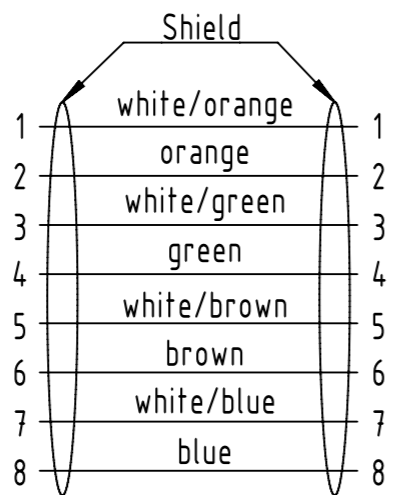
Connector Location B



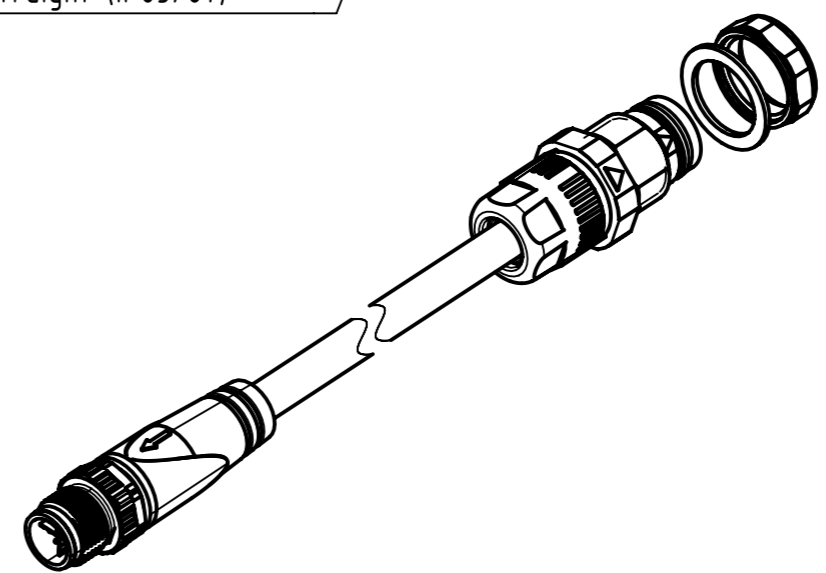
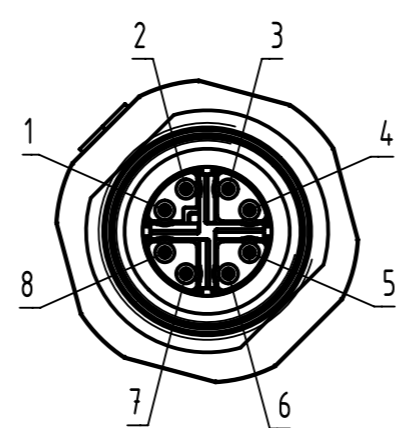
X
male



Loading Plan
acc. to TIA/EIA 568B



Y
female
(without nut and seal)

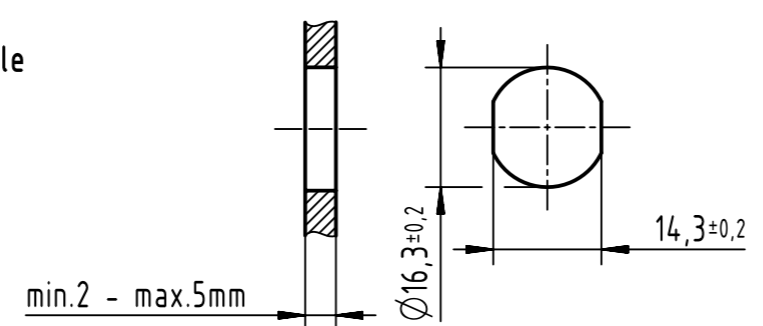


| | | |
|--------------------------------|-------|---------|
| length in "1m" step | 100 | XXX=000 |
| | 99 | XXX=990 |
| | 12 | XXX=120 |
| | 11 | XXX=110 |
| length in "0.1m" step | 10 | XXX=100 |
| | 9.9 | XXX=099 |
| | 9.8 | XXX=098 |
| | 0.5 | XXX=005 |
| | 0.4 | XXX=004 |
| | 0.3 | XXX=003 |
| | 0.2 | XXX=002 |
| Step | a [m] | XXX |

| | |
|------------|-----------|
| 6.0 to 100 | ±1% |
| 0.6 to 5.9 | +0.05 |
| 0.2 to 0.5 | +0.03 |
| a [m] | Tolerance |

- Temperature range: -25°C ... +80°C
- Nut and seal pre-packaged in a separate poly-bag within the main poly-bag
- * Cat.6A 10 Gbit/s Ethernet transmission possible for lengths up to 45m

Panel cut out



| | |
|---|----------------|
| HARTING IE Cat.6A 4x2xAWG 26/7 PUR, yellow | 0948C072756XXX |
| Type of cable | Part no. |

| | | | | | | | |
|---|---|----------------------------------|--|--------------------|------------------------|---------------------------------|--|
| All Dimensions in mm | | Tech. Character. | | Free size tol. | | According to production drawing | |
| All rights reserved Department HCS - RO | Created by MUNTEANV Muntean | Inspected by COSTEA Costea | Standardisation MUNTEANV Muntean | Date 2022-05-20 | State Final Release | | Doc-Key / ECM-Nr. 101006054/UGD/001/A 500000217939 |
| | Title M12 X-cod 8-pol st/PFT m/f PUR | | | Rev. A | | Page 1/1 | |
| HARTING Customised Solutions D-32339 Espelkamp | | Type TB | Number 0948C072756XXX | | | | |